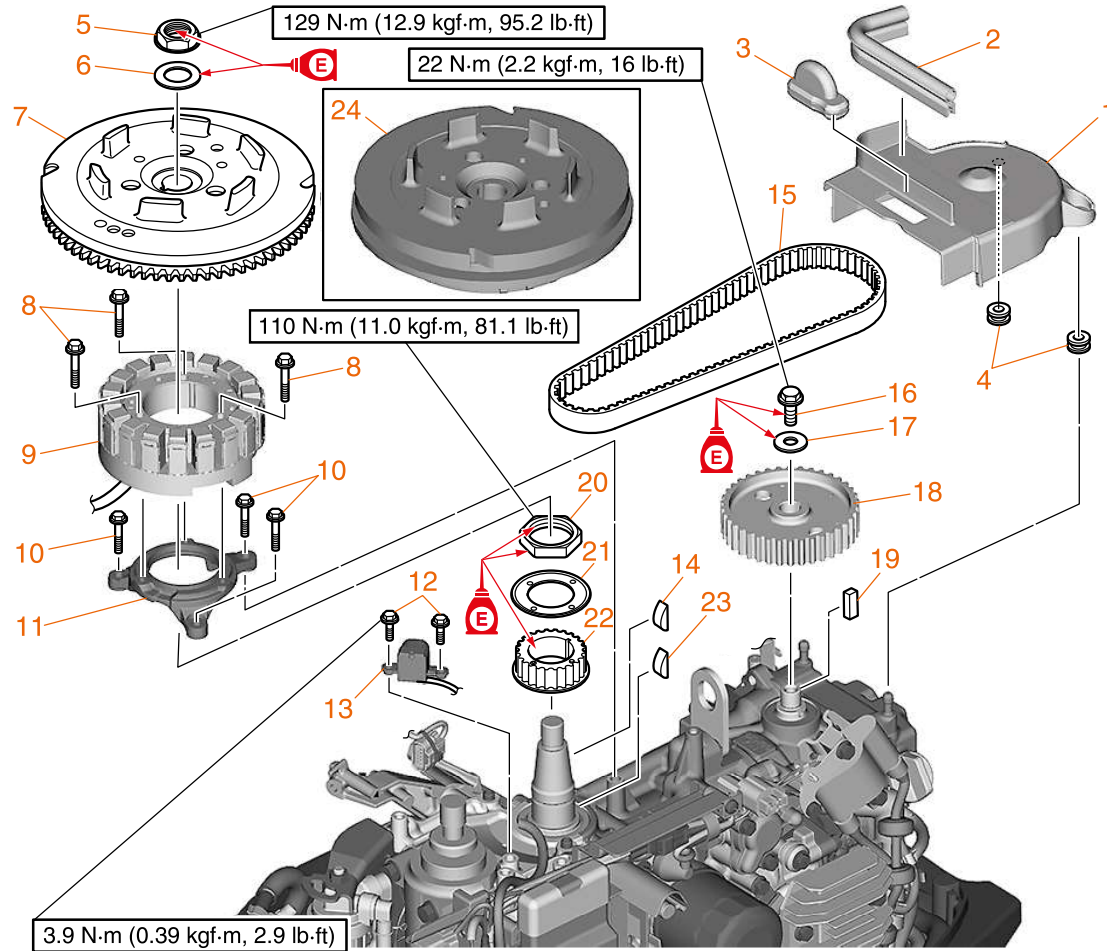


Flywheel magneto and timing belt

Removing the flywheel magneto and timing belt



Order	Part name	Q'ty	Rmrk.
1	Cover	1	
2	Damper	1	
3	Grommet	1	
4	Grommet	2	
5	Nut	1	24 mm
6	Washer	1	
7	Flywheel	1	*1
8	Bolt M6 × 30 mm	3	
9	Stator	1	
10	Bolt M6 × 25 mm	3	
11	Base	1	
12	Bolt M5 × 16 mm	2	

Order	Part name	Q'ty	Rmrk.
13	Pulser coil	1	
14	Woodruff key	1	
15	Timing belt	1	
16	Bolt M10 × 35 mm	1	
17	Washer	1	
18	Driven sprocket	1	
19	Straight key	1	
20	Nut	1	41 mm
21	Retaining plate	1	
22	Drive sprocket	1	
23	Woodruff key	1	
24	Flywheel	1	*2

*1. Except for EUR, RUS/manual starter model

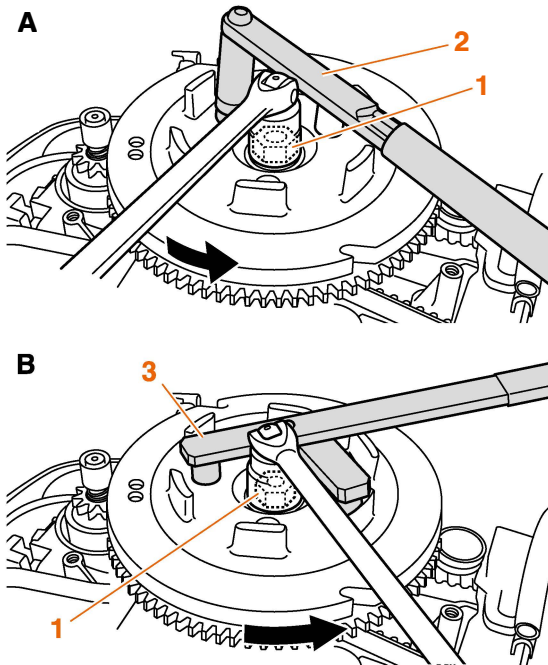
*2. For EUR, RUS/manual starter model

Removing the flywheel

1. Loosen:
 - Flywheel nut "1"

⚠ WARNING

Apply force in the direction of the arrows shown to prevent the flywheel holder "2" from slipping off easily.



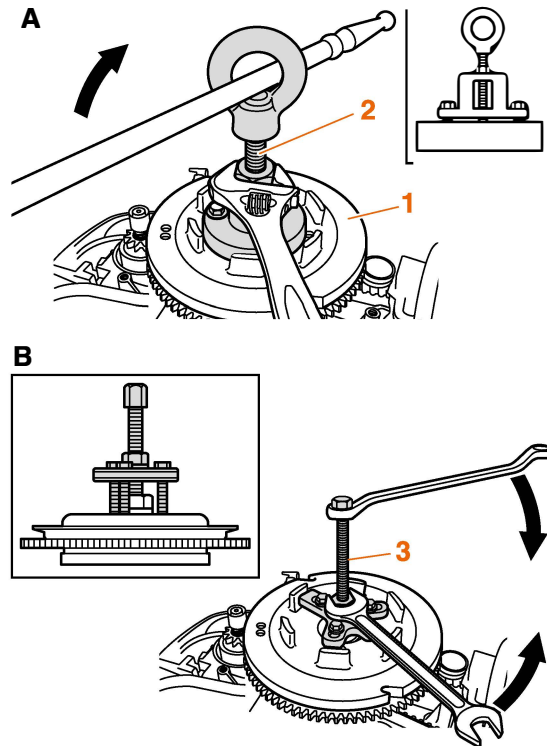
- A. Worldwide
- B. USA and Canada

2. Remove:
 - Flywheel "1"

NOTICE

To prevent damage to the engine or tools, screw in the puller set bolts evenly and completely so that the universal puller is parallel to the flywheel magneto.

Flywheel magneto and timing belt



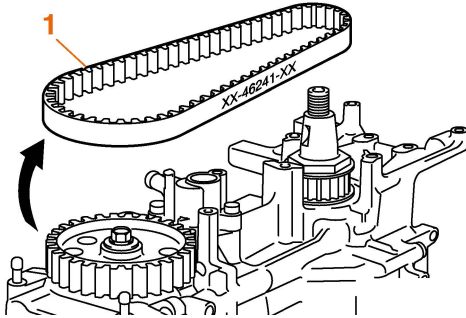
- A. Worldwide
- B. USA and Canada

NOTICE

When the timing belt is not installed, do not turn the crankshaft or driven sprocket. Otherwise, the pistons and valves could collide with each other and be damaged.

1. Remove:
 - Timing belt "1"

TIP: _____
Remove the timing belt "1" from the driven sprocket side.

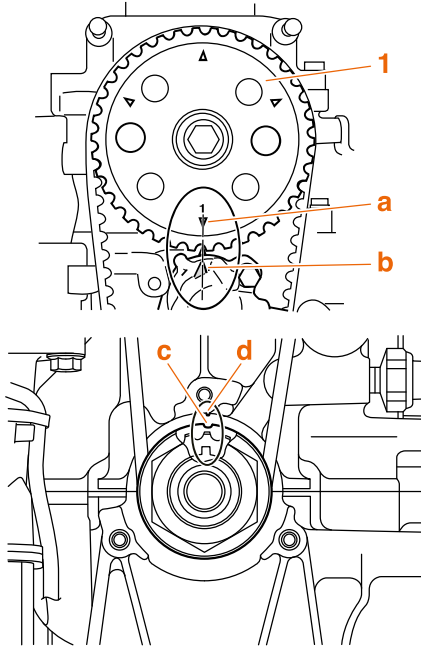


2. Loosen:
 - Driven sprocket bolt "1"

Checking the timing belt and sprocket

1. Check:
 - Interior and exterior of the timing belt
 - Drive sprocket
 - Driven sprocket
 - Cracked/damaged/worn → Replace.

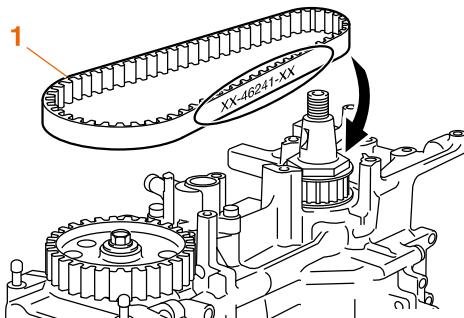
2. Check that the “△” mark “a” on the driven sprocket “1” is aligned with the “△” mark “b” on the cylinder head, and that the hole “c” on the retaining plate is aligned with the mark “d” on the cylinder block.



3. Install:
 - Timing belt “1”

TIP: _____

- Install the timing belt “1” from the drive sprocket side.
- Be careful not to install the timing belt with the part number upside down.



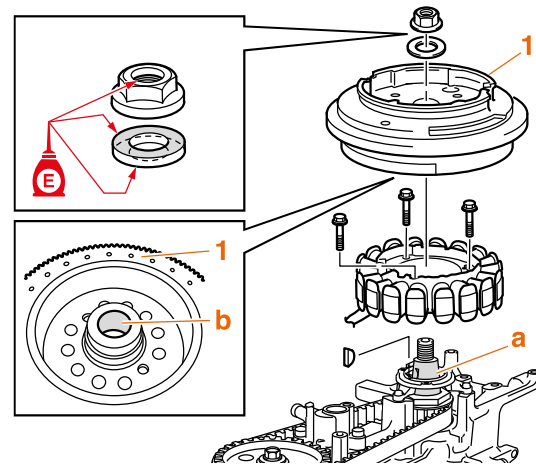
Installing the stator assembly

1. Install:
 - Stator assembly base
 - Stator assembly
 - Pulser coil

Installing the flywheel magneto

1. Install:
 - Woodruff key
 - Flywheel “1”
 - Washer
 - Flywheel nut

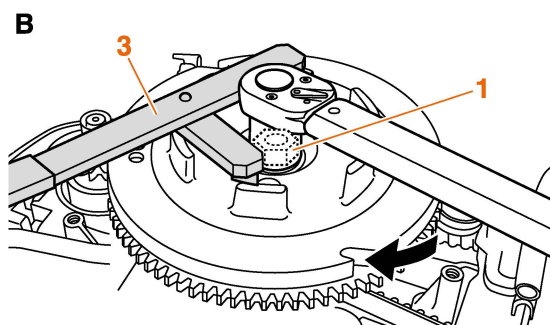
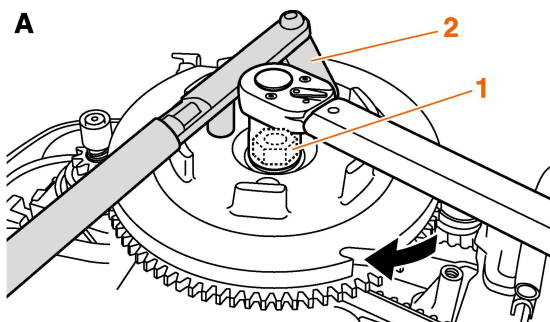
TIP: _____
 Make sure to remove any grease from the tapered portion of the crankshaft “a” and the flywheel “b”.



2. Tighten:
- Flywheel nut “1”

NOTICE

Apply force in the direction of the arrow to prevent the flywheel holder from slipping off easily.



- A. Worldwide
B. USA and Canada

Flywheel nut “1”
129 N·m (12.9 kgf·m, 95.2 lb·ft)

3. Install:
- Sprocket cover
 - Sprocket damper
 - Sprocket cover grommet

TIP: _____

Route the stator assembly leads.

See “Electrical component and wire harness routing” (5-1).