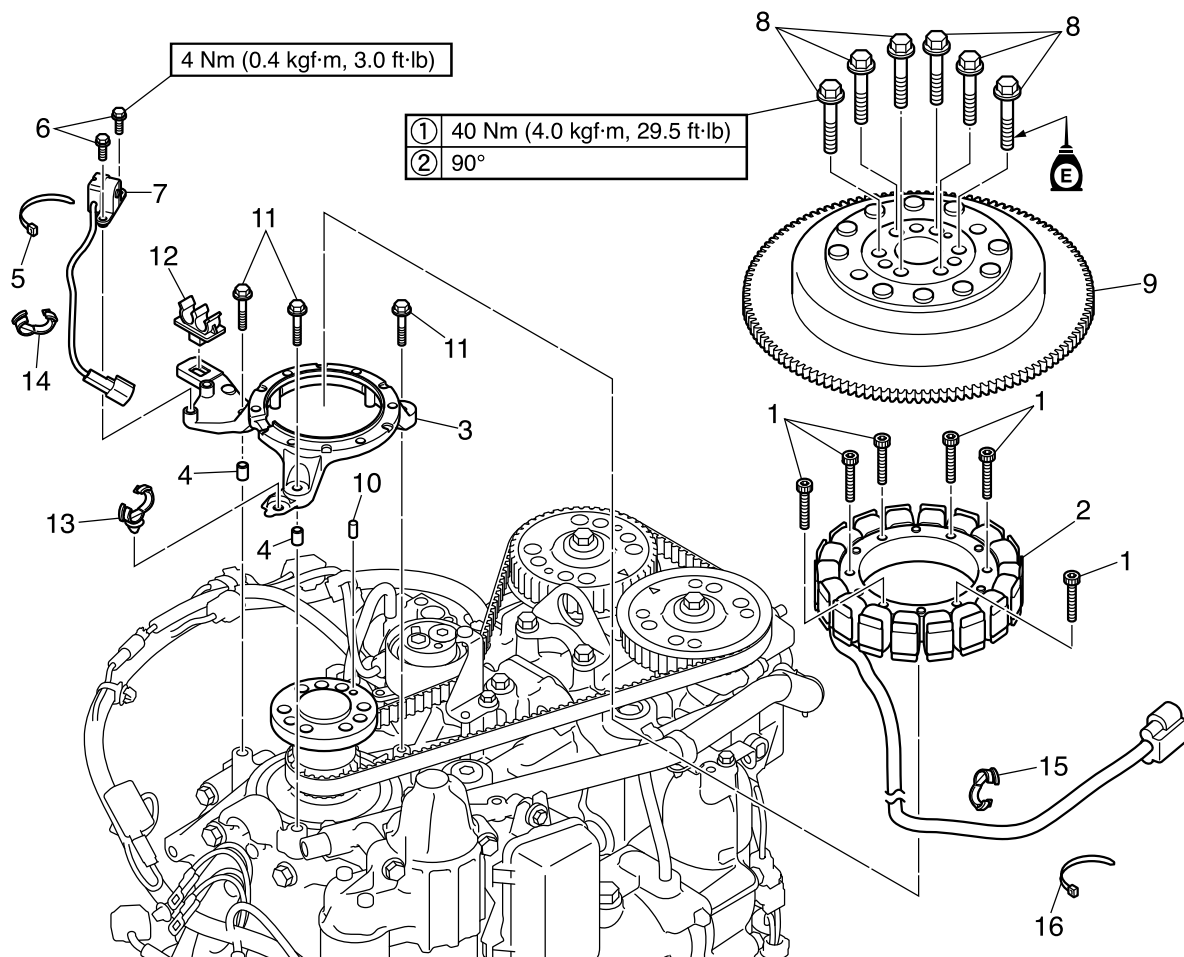


Flywheel magneto



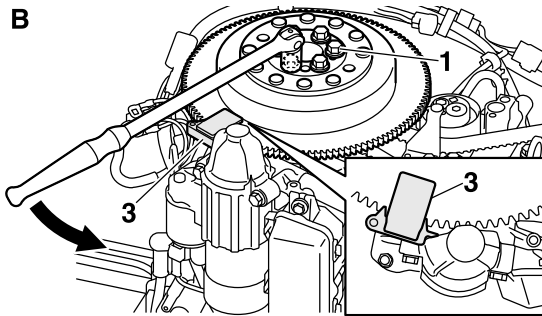
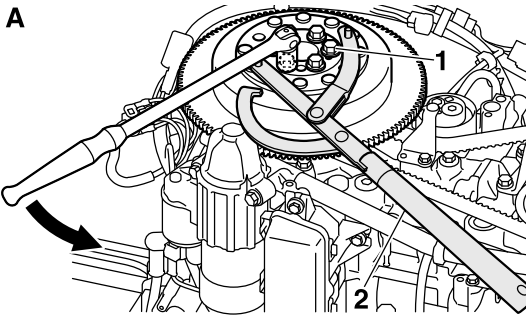
No.	Part name	Q'ty	Remarks
1	Bolt	6	M6 × 35 mm
2	Stator assembly	1	
3	Base assembly	1	
4	Dowel pin	2	
5	Plastic tie	1	
6	Bolt	2	M5 × 16 mm
7	Pulser coil	1	
8	Bolt	6	Not reusable, M10 × 50 mm
9	Flywheel magneto	1	
10	Dowel pin	1	
11	Bolt	3	M6 × 30 mm
12	Holder	1	
13	Holder	1	
14	Clamp	1	
15	Clamp	1	
16	Plastic tie	1	

Removing the flywheel magneto

1. Loosen the flywheel magneto bolts "1".

NOTICE

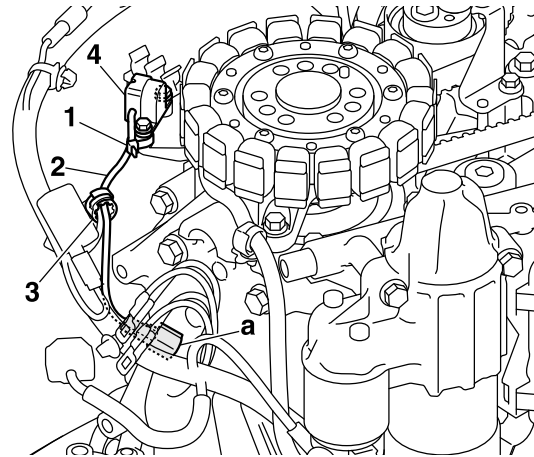
Apply force in the direction of the arrow to prevent the special service tool "2" from slipping off easily.



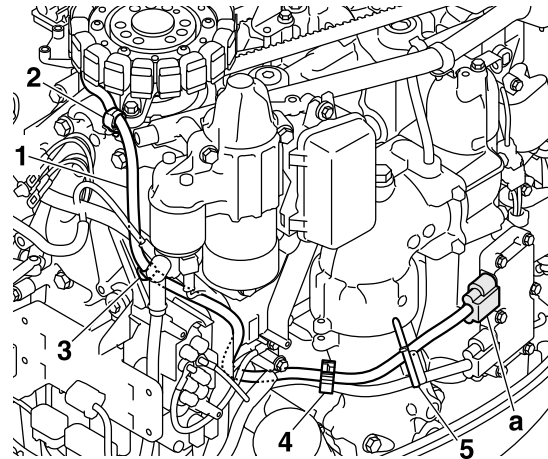
- A. Conventional special service tool
B. New special service tool

Rotor holding tool "2"
90890-01235
Universal magneto & rotor holder "2"
YU-01235
Flywheel stopper B "3"
90890-06686
Flywheel stopper B "3"
YB-06686

2. Remove the flywheel magneto.
3. Disconnect the pulser coil coupler "a".
4. Remove the plastic tie "1".
5. Remove the pulser coil lead "2" from the holder "3".
6. Remove the pulser coil "4".

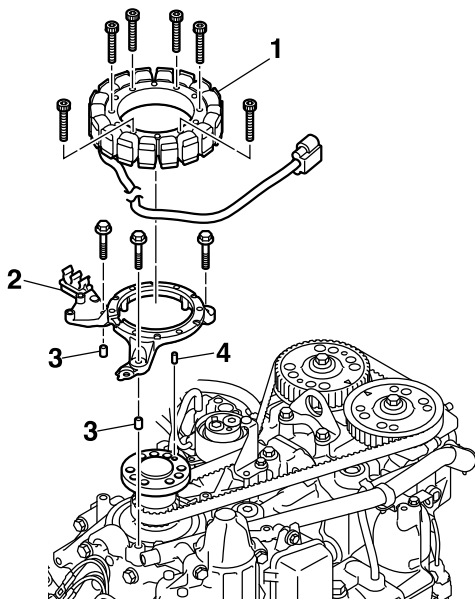


7. Remove the stator assembly lead "1" from the holders "2" and "3", and clamp "4".
8. Remove the plastic tie "5".
9. Disconnect the stator assembly coupler "a".



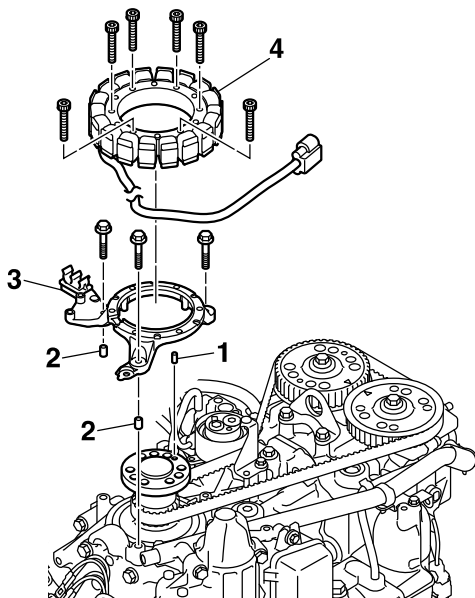
10. Remove the stator assembly "1", base assembly "2", and dowel pins "3".

11. Remove the dowel pin "4" from the crankshaft.



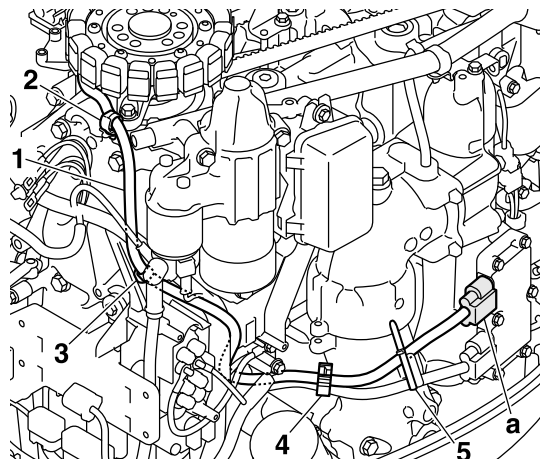
Installing the flywheel magneto

1. Install the dowel pin "1" to the crankshaft.
2. Install the dowel pins "2" to the base assembly "3".
3. Install the base assembly "3".
4. Install the stator assembly "4".

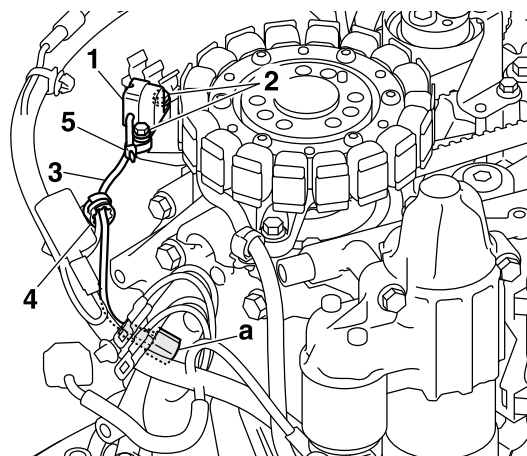


5. Fasten the stator assembly leads "1" using the holders "2" and "3", and clamp "4".

6. Connect the stator assembly coupler "a".
7. Install the plastic tie "5".



8. Install the pulser coil "1", adjust the air gap, and then tighten the pulser coil bolts "2" to the specified torque. See "Checking the pulser coil air gap" (7-2).
9. Connect the pulser coil coupler "a".
10. Fasten the pulser coil lead "3" using the holder "4" and plastic tie "5".



Pulser coil bolt "2"
4 Nm (0.4 kgf·m, 3.0 ft·lb)

11. Install the flywheel magneto, and then tighten new flywheel magneto bolts "1" to the specified torques in 2 stages and in the order [1], [2], and so on.

NOTICE

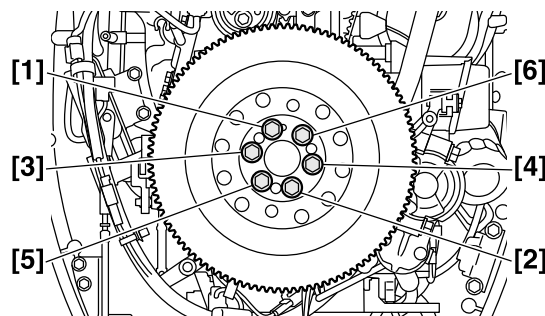
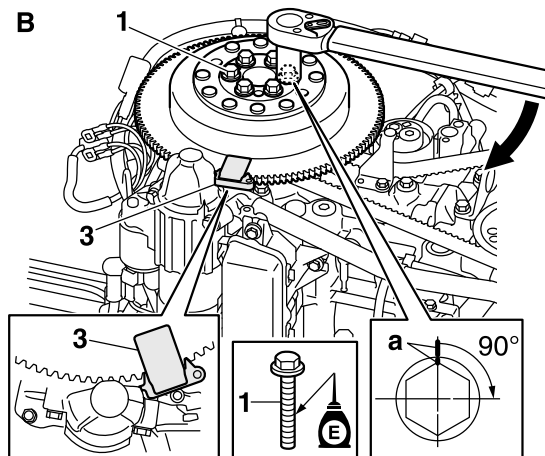
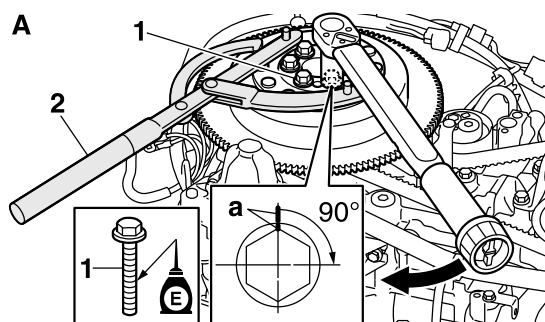
Apply force in the direction of the arrow to prevent the special service tool “2” from slipping off easily.

TIP:

In the second tightening stage for the flywheel magneto bolts “1”, mark the bolts and flywheel magneto with identification marks “a”, and then tighten the bolts 90° from the marks on the fly-wheel magneto.

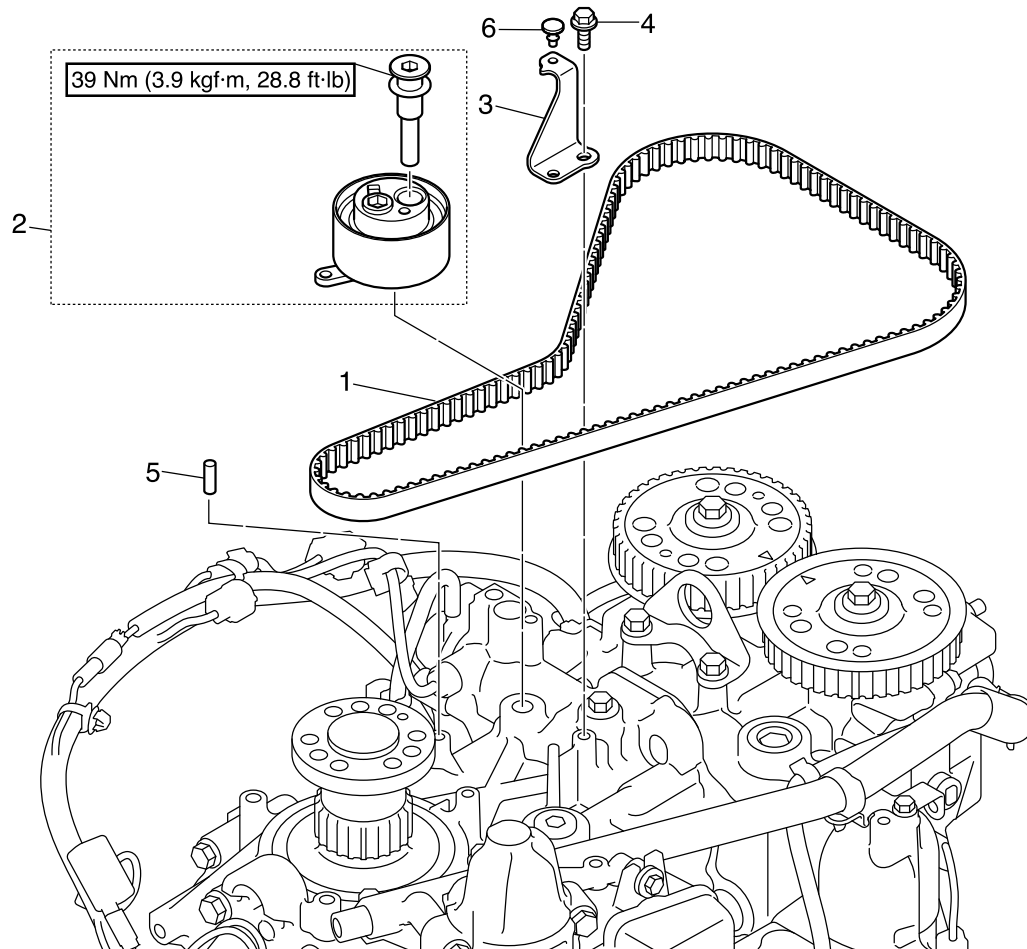
Rotor holding tool “2”
90890-01235
Universal magneto & rotor holder “2”
YU-01235
Flywheel stopper B “3”
90890-06686
Flywheel stopper B “3”
YB-06686

Flywheel magneto bolt “1”
1st: 40 Nm (4.0 kgf-m, 29.5 ft-lb)
2nd: 90°



- A. Conventional special service tool
B. New special service tool

Timing belt



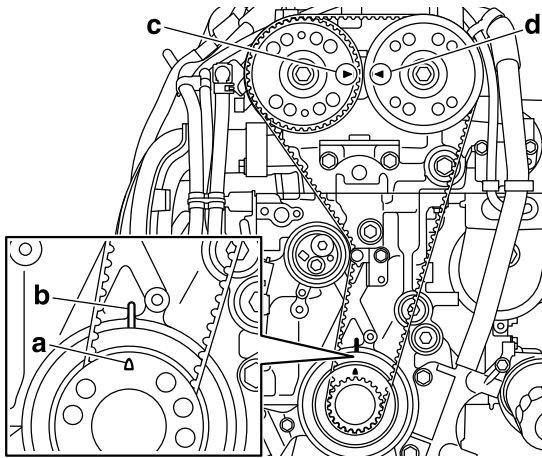
No.	Part name	Q'ty	Remarks
1	Timing belt	1	
2	Timing belt tensioner	1	
3	Plate	1	
4	Bolt	1	M6 × 16 mm
5	Dowel pin	1	
6	Grommet	1	

Removing the timing belt

NOTICE

When the timing belt is not installed, do not turn the crankshaft or driven sprocket. Otherwise, the pistons and valves could collide with each other and be damaged.

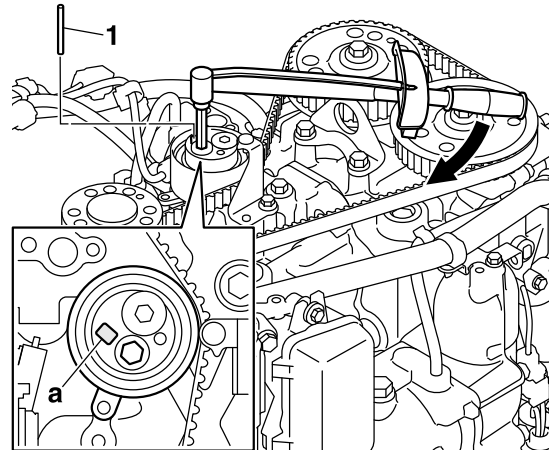
1. Turn the crankshaft clockwise to align the “△” mark “a” in the crankshaft and the protrusion “b” on the cylinder block. Check that the “▲” marks “c” and “d” on the driven sprockets are aligned.



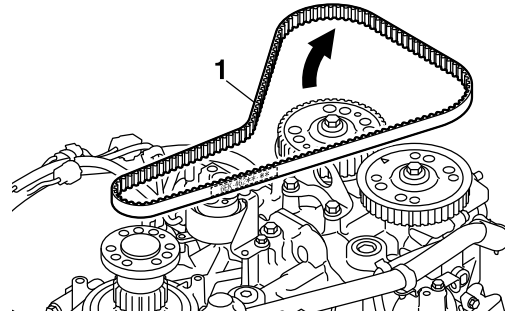
2. Turn the timing belt tensioner gradually clockwise using a hexagon wrench, and then insert a 5.0 mm (0.2 in) diameter pin “1” into the hole “a”.

TIP:

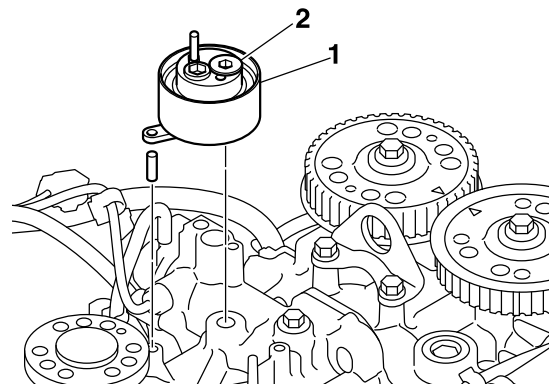
- When turning the timing belt tensioner, apply a force of 15 Nm (1.5 kgf·m, 11.1 ft·lb) or less.
- Leave the pin “1” inserted into the hole “a” of the timing belt tensioner until the timing belt is installed again.



3. Remove the timing belt “1” from the driven sprocket side.



4. Remove the timing belt tensioner “1” along with the timing belt tensioner bolt “2”.



Checking the timing belt

1. Check the interior and exterior of the timing belt. Replace if cracked, damaged, or worn.

Installing the timing belt

NOTICE

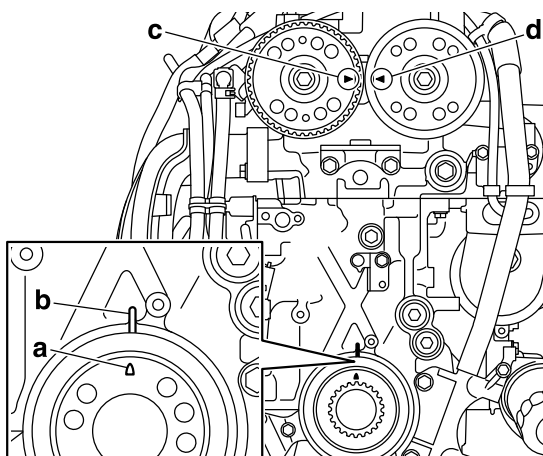
When the timing belt is not installed, do not turn the crankshaft or driven sprocket. Otherwise, the pistons and valves could collide with each other and be damaged.

1. Remove all of the spark plugs.

TIP:

Before installing the timing belt, remove all spark plugs to remove compression and prevent the crankshaft from turning.

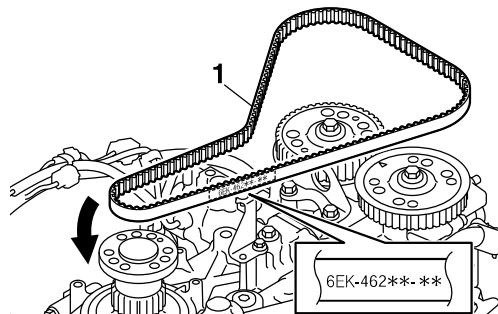
2. Check that the “△” mark “a” in the crankshaft and the protrusion “b” on the cylinder block are aligned. Check that the “▲” marks “c” and “d” on the driven sprockets are aligned.



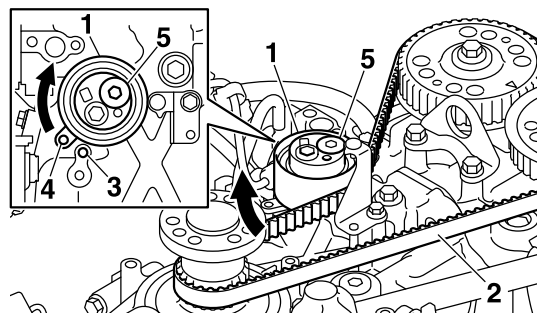
3. Install a new timing belt “1” with its part number in the proper orientation, from the drive sprocket side to the port and star-board driven sprockets in the counter-clockwise direction.

NOTICE

Do not apply grease or oil to the timing belt.



4. While pressing the timing belt tensioner “1” to hold the timing belt “2”, assemble the timing belt tensioner temporarily.
5. Align the dowel pin “3” with the dowel hole “4” in the timing belt tensioner.
6. Tighten the timing belt tensioner bolt “5” to the specified torque.

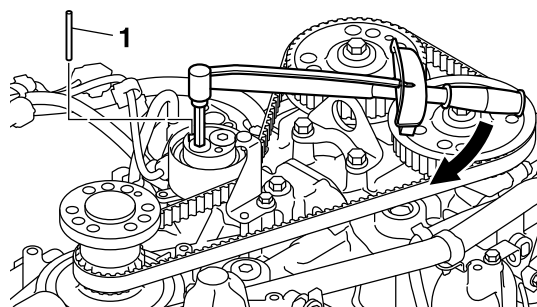


Timing belt tensioner bolt “5”
39 Nm (3.9 kgf·m, 28.8 ft·lb)

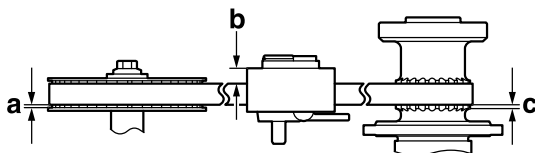
7. Turn the timing belt tensioner gradually clockwise using a hexagon wrench, and then remove the pin “1”.

TIP:

When turning the timing belt tensioner, apply a force of 15 Nm (1.5 kgf·m, 11.1 ft·lb) or less.



8. Turn the timing belt tensioner gradually counterclockwise until the timing belt is taut.
9. Adjust the timing belt to the specified installation height "a", "b", and "c".



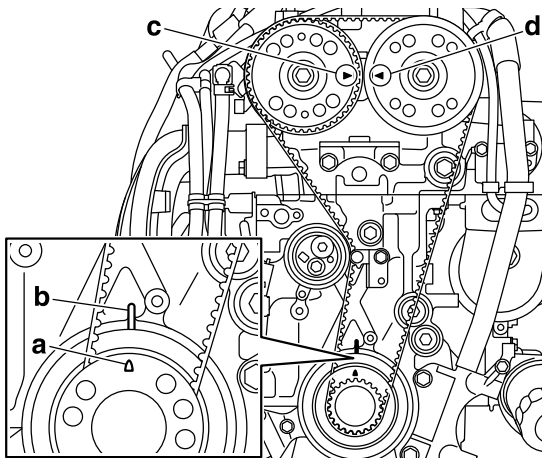
Timing belt installation height

"a": 1.0 mm (0.04 in)

"b": 10.1 mm (0.40 in)

"c": 1.0 mm (0.04 in)

10. Turn the crankshaft clockwise 2 full turns, and then check that the "△" mark "a" in the crankshaft and the protrusion "b" on the cylinder block are aligned. Also, check that the "▲" marks "c" and "d" on the driven sprockets are aligned.



11. Install all of the spark plugs, and then tighten them to the specified torque.

Spark plug

25 Nm (2.5 kgf·m, 18.4 ft·lb)