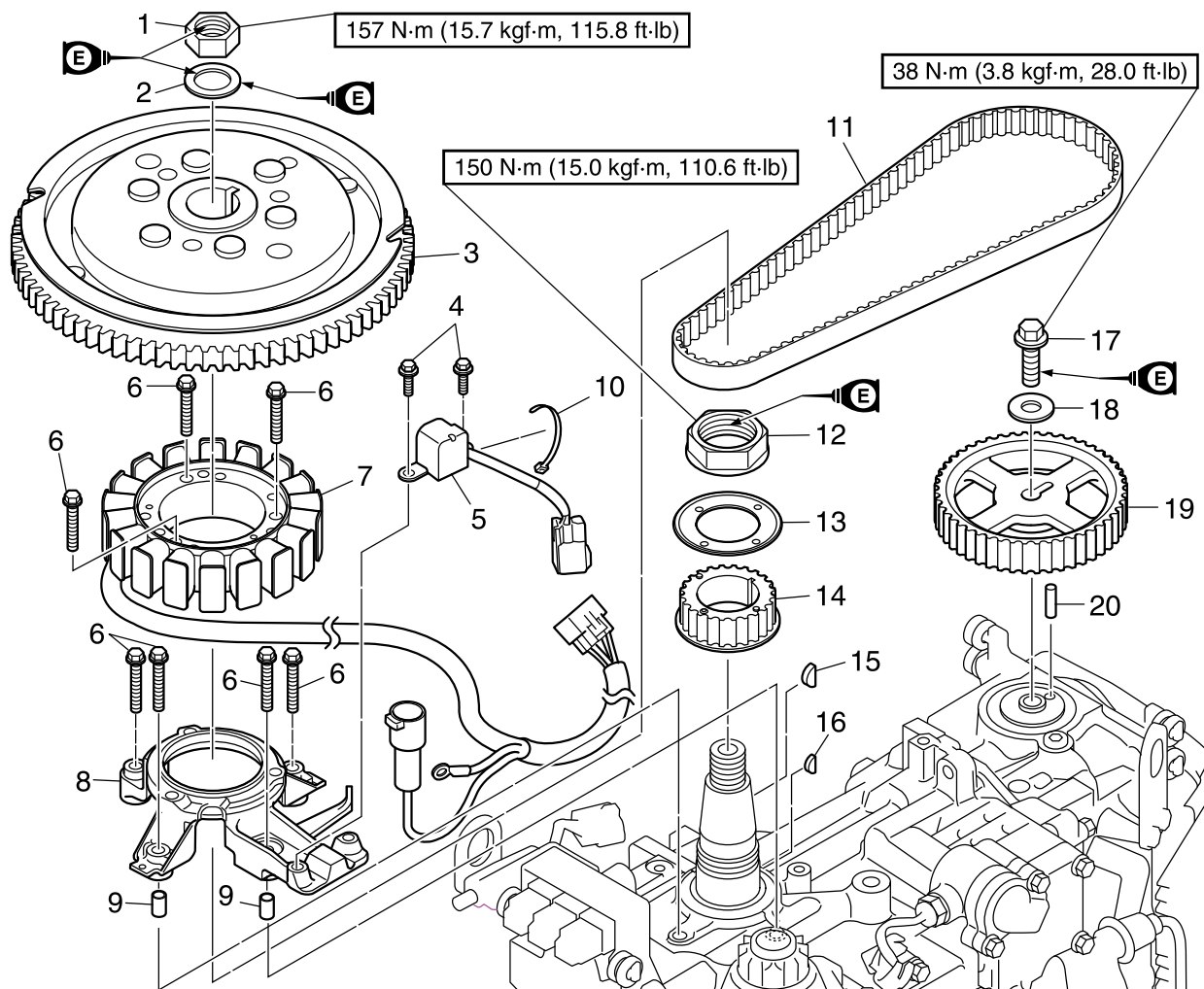
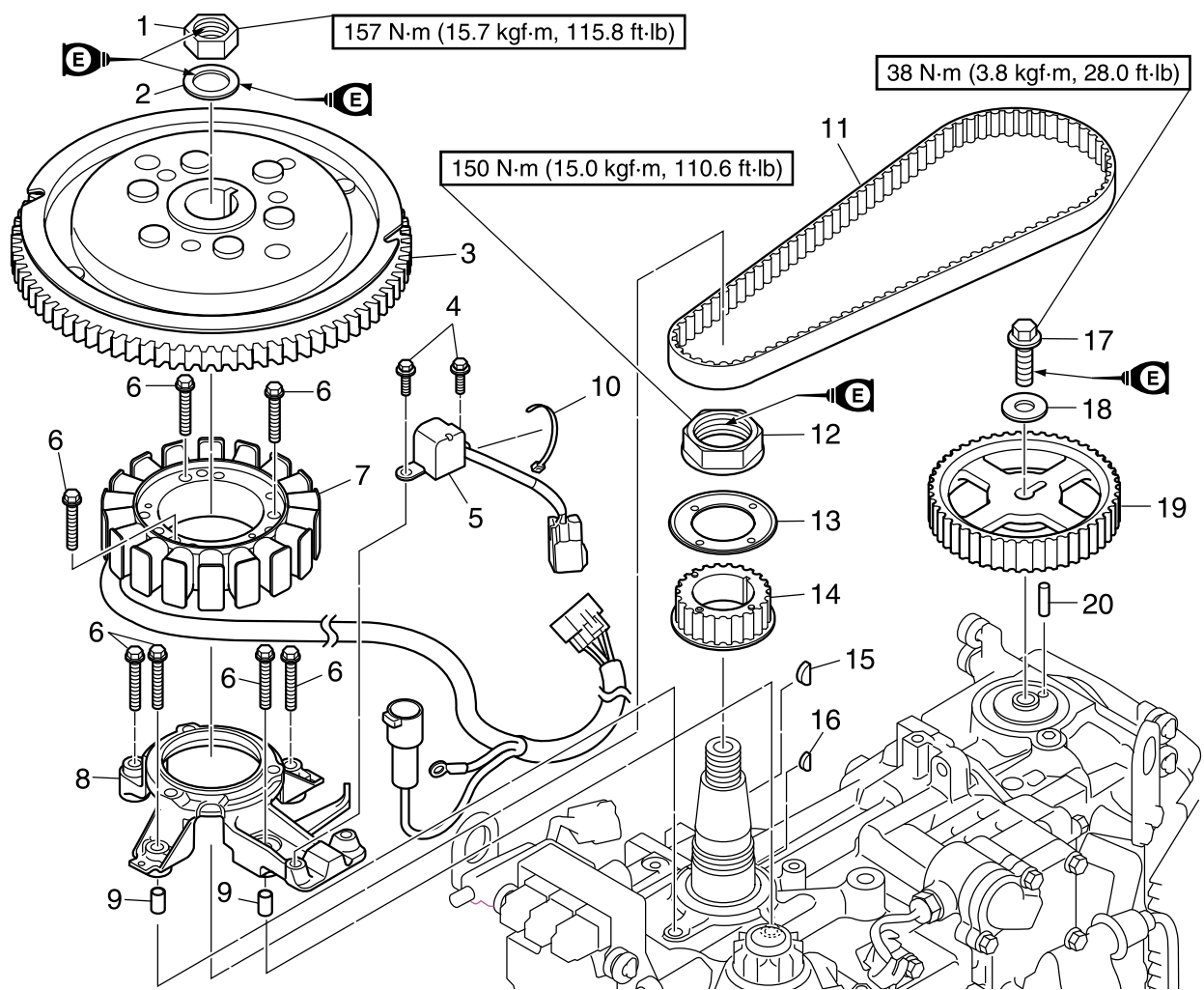




Flywheel magnet and timing belt



No.	Part name	Q'ty	Remarks
1	Flywheel magnet nut	1	Width across flats: 30 mm
2	Washer	1	
3	Flywheel magnet	1	
4	Bolt	2	M5 × 12 mm
5	Pulser coil	1	
6	Bolt	7	M6 × 30 mm
7	Stator assembly	1	
8	Base	1	
9	Dowel	2	
10	Plastic tie	1	
11	Timing belt	1	
12	Drive sprocket nut	1	Width across flats: 41 mm
13	Retaining plate	1	
14	Drive sprocket	1	
15	Woodruff key	1	
16	Woodruff key	1	
17	Driven sprocket bolt	1	M10 × 35 mm

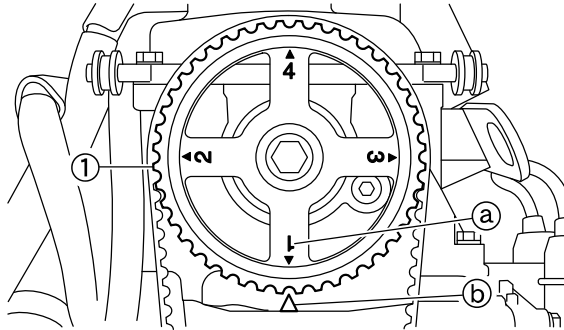


No.	Part name	Q'ty	Remarks
18	Washer	1	
19	Driven sprocket	1	
20	Dowel	1	

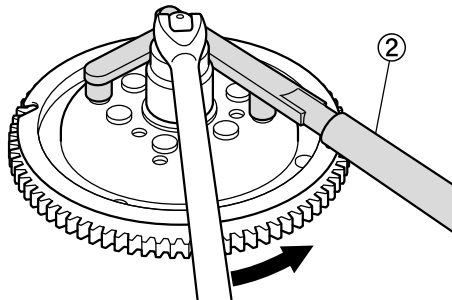


Removing the flywheel magnet

1. Turn the flywheel magnet clockwise to align the “1” mark (a) on the driven sprocket ① with the “△” mark (b) on the cylinder head.

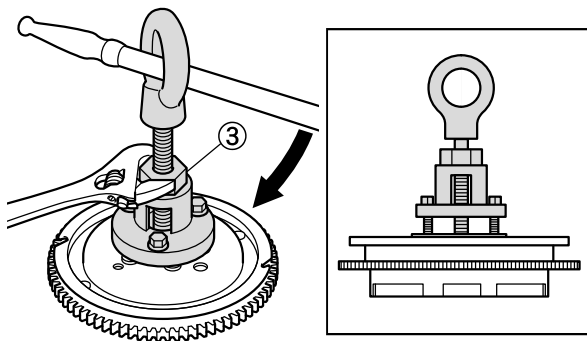


2. Loosen the flywheel magnet nut. **NOTICE:** Apply force in the direction of the arrow to prevent the flywheel holder from slipping off easily.



Flywheel holder ②: 90890-06522

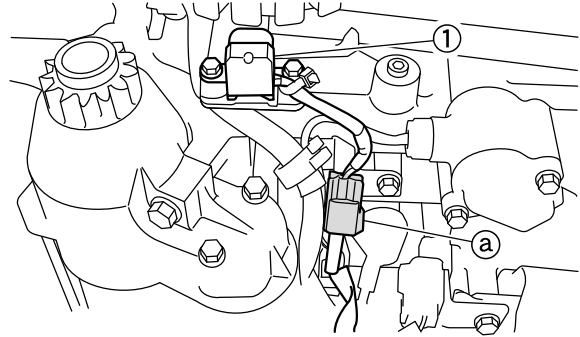
3. Remove the flywheel magnet and Woodruff key. **NOTICE:** To prevent damage to the engine or tools, screw in the flywheel puller set bolts evenly and completely so that the flywheel puller is parallel to the flywheel magnet.



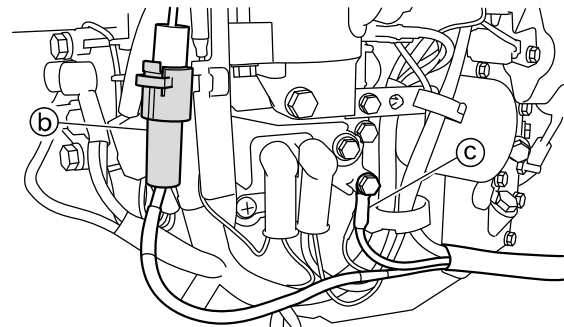
Flywheel puller ③: 90890-06521

Removing the stator assembly

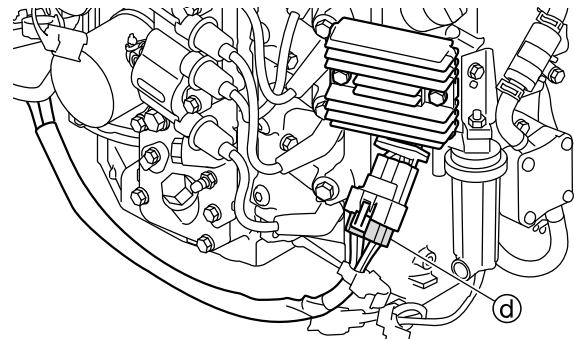
1. Disconnect the pulser coil coupler (a), and then remove the pulser coil ①.



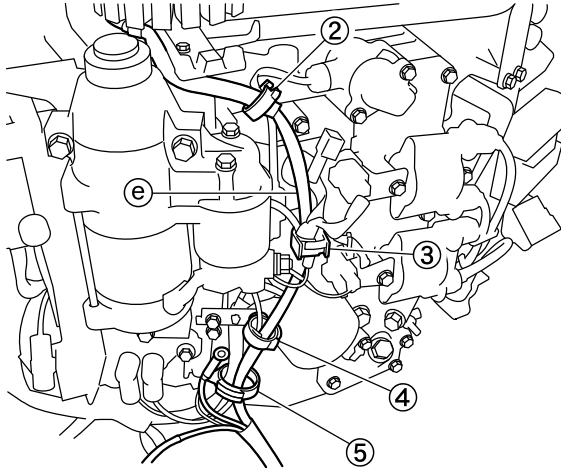
2. Disconnect the positive lead coupler (b), and then remove the ground lead (c).



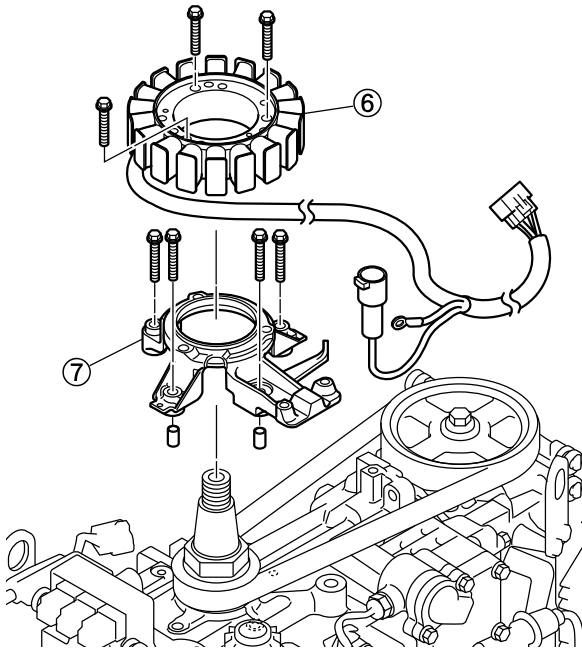
3. Disconnect the Rectifier Regulator coupler (d).



4. Remove the stator assembly harness (e) from the holders ②, ③, ④, and ⑤.



5. Remove the stator assembly ⑥ and base ⑦.

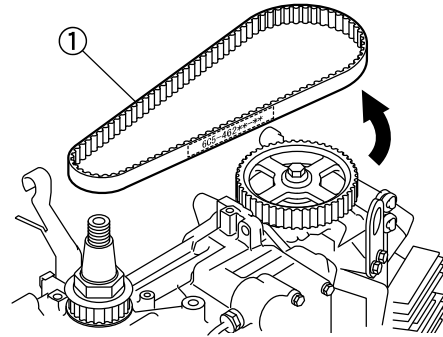


Removing the timing belt and sprocket

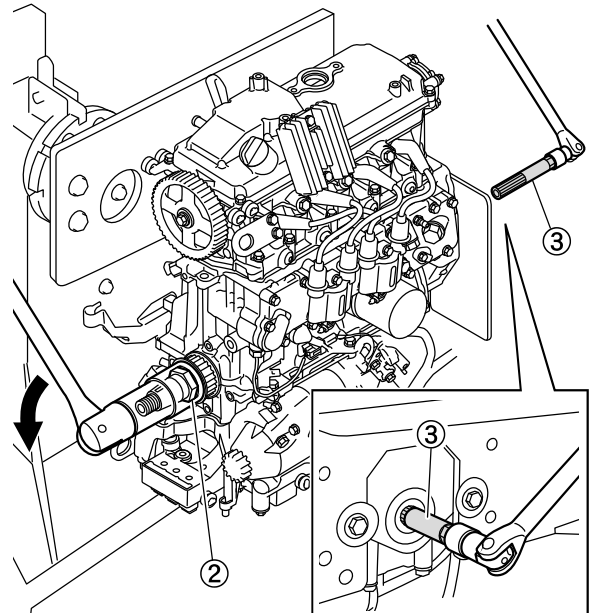
NOTICE

When the timing belt is not installed, do not turn the crankshaft or driven sprocket. Otherwise, the pistons and valves could collide with each other and be damaged.

1. Remove the timing belt ① from the driven sprocket side.



2. Loosen the drive sprocket nut ②.

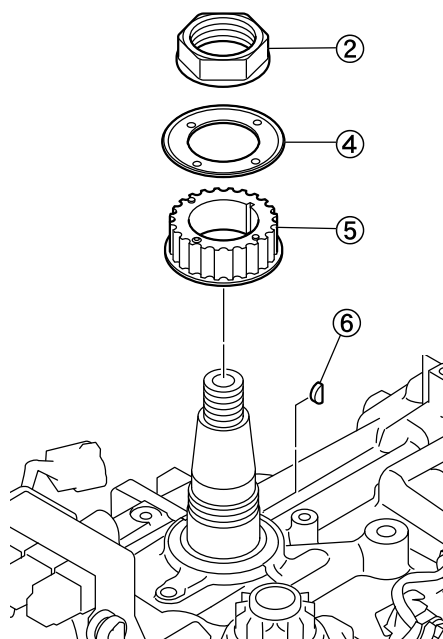


Crankshaft holder ③: 90890-06562

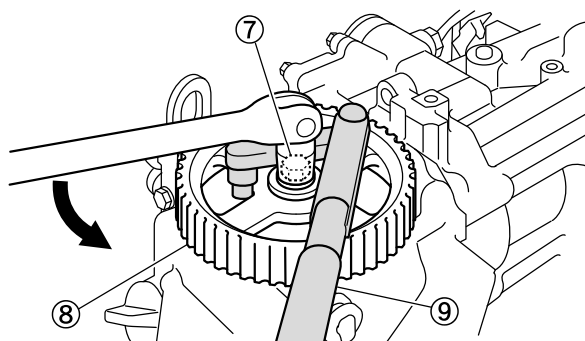
TIP:

Use the air tool to loosen the drive sprocket nut easily.

3. Remove the drive sprocket nut ②, retaining plate ④, drive sprocket ⑤, and Woodruff key ⑥.



4. Loosen the driven sprocket bolt (7), and then remove the driven sprocket (8). **NOTICE:** When loosening the driven sprocket bolt, do not turn the camshaft.



Flywheel holder (9): 90890-06522

Checking the timing belt and sprocket

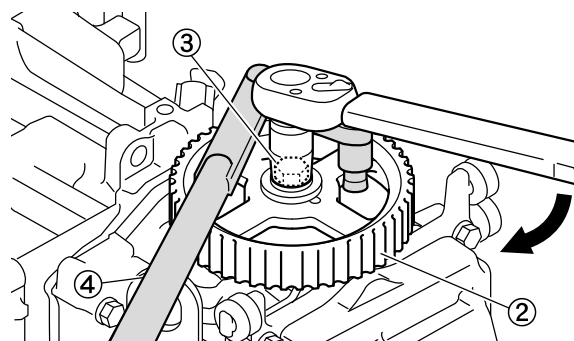
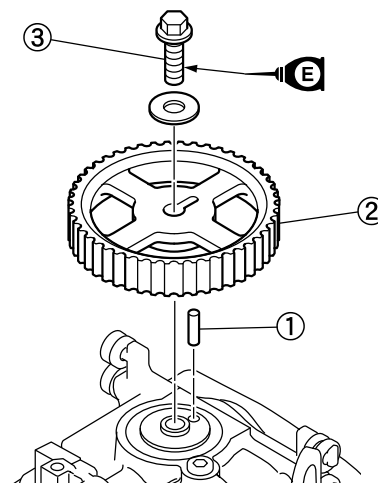
1. Check the interior and exterior of the timing belt. Replace if cracked, damaged, or worn.
2. Check the drive sprocket and driven sprocket. Replace if cracked, damaged, or worn.

Installing the sprocket and timing belt

NOTICE

When the timing belt is not installed, do not turn the crankshaft or driven sprocket. Otherwise, the pistons and valves could collide with each other and be damaged.

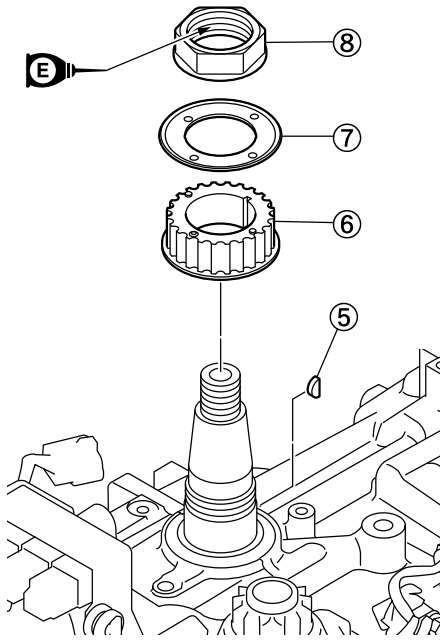
1. Install the dowel (1) and driven sprocket (2), and then tighten the driven sprocket bolt (3) to the specified torque.



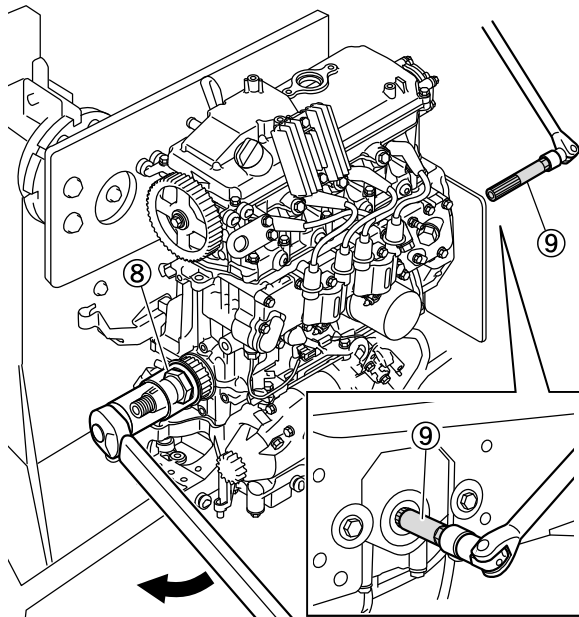
Flywheel holder (4): 90890-06522

Driven sprocket bolt (3):
38 N·m (3.8 kgf·m, 28.0 ft·lb)

2. Install the Woodruff key (5), drive sprocket (6), retaining plate (7), and drive sprocket nut (8).



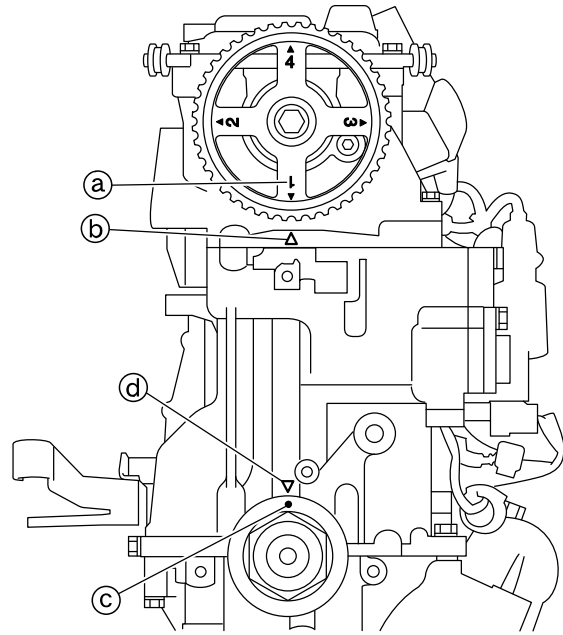
3. Tighten the drive sprocket nut ⑧ to the specified torque.



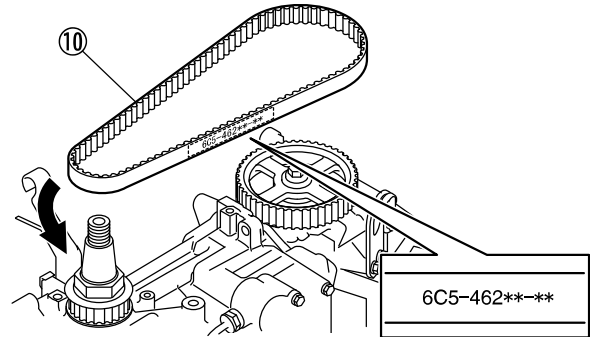
Crankshaft holder ⑨: 90890-06562

Drive sprocket nut ⑧:
150 N·m (15.0 kgf·m, 110.6 ft·lb)

4. Check that the “1” mark ① on the driven sprocket is aligned with the “△” mark ② on the cylinder head, and that the hole ③ on the retaining plate is aligned with the “△” mark ④ on the cylinder block.



5. Install the timing belt ⑩ from the drive sprocket side.

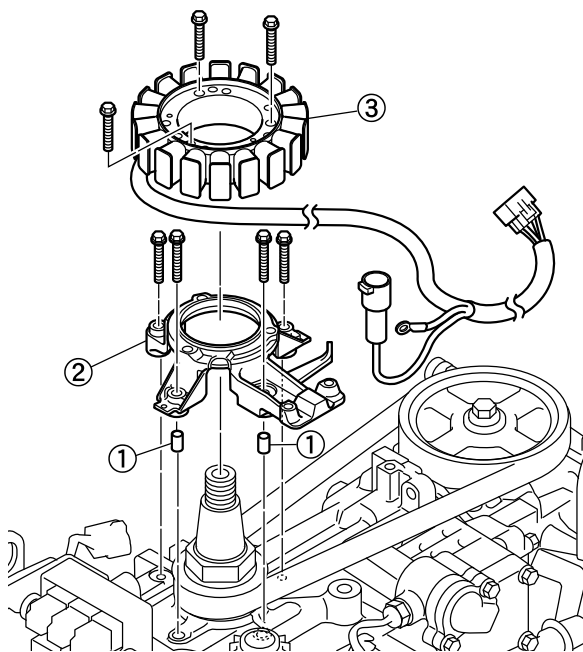


TIP:

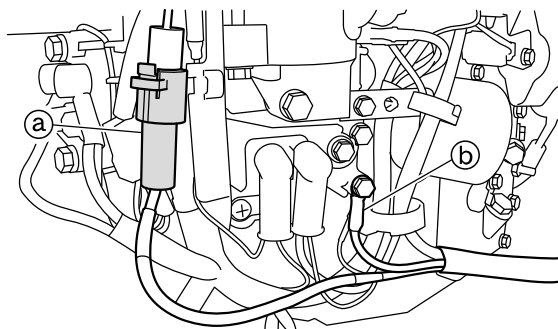
Be careful not to install the timing belt with the part number upside down.

Installing the stator assembly

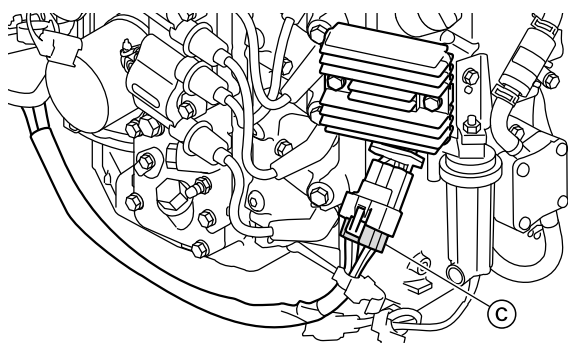
1. Install the dowels ①, base ②, and stator assembly ③.



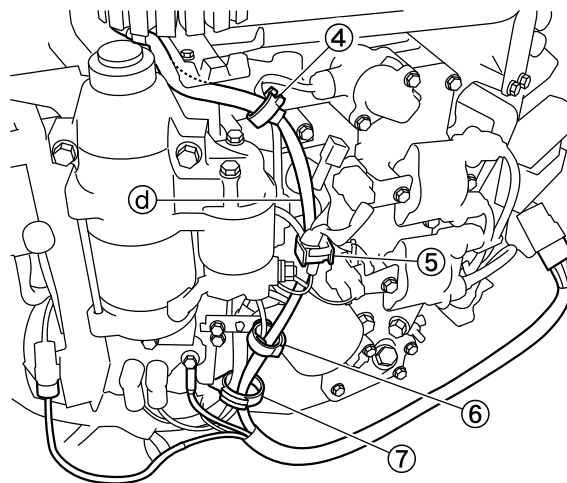
2. Connect the positive lead coupler (a), and then install the ground lead (b).



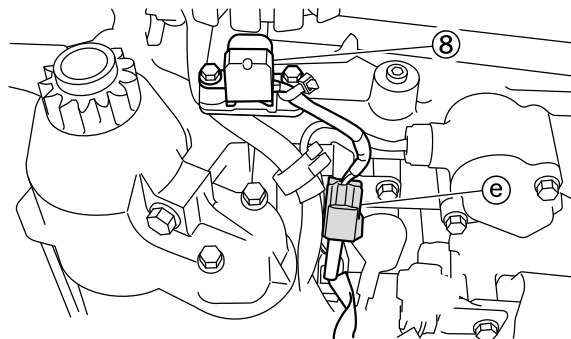
3. Connect the Rectifier Regulator coupler (c).



4. Install the stator assembly harness (d) to the holders (4, 5, 6, and 7).

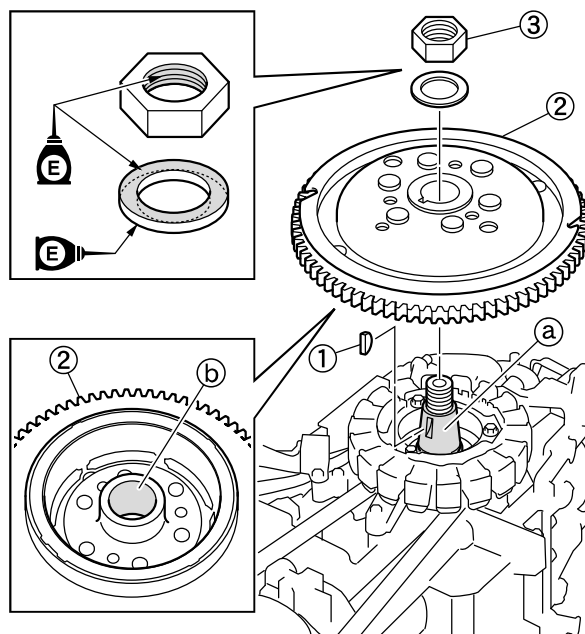


5. Install the pulser coil (8), and then connect the pulser coil coupler (e).



Installing the flywheel magnet

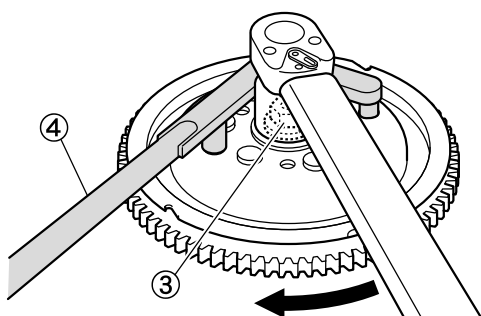
1. Install the Woodruff key (1), and then install the flywheel magnet (2) and flywheel magnet nut (3).



TIP: _____

Make sure to remove any oil from the tapered portions of the crankshaft ① and flywheel magnet ②.

2. Tighten the flywheel magnet nut ③ to the specified torque. **NOTICE:** Apply force in the direction of the arrow to prevent the flywheel holder from slipping off easily.



Flywheel holder ④: 90890-06522

Flywheel magnet nut ③:
157 N·m (15.7 kgf·m, 115.8 ft·lb)